



Fastener Assembly

Torque Transducers, Hand Torque/ Torque-Angle Wrenches, Portable Digital Transducer Instruments, Joint Simulators, Data Acquisition Instrumentation, & Accessories





Fastener Assembly

Ensuring quality assembly of threaded fasteners begins with proper setup of the assembly tools and may include periodic testing of the tools on the assembly line, torque audits of assembled fasteners, and the capability of testing and analyzing fasteners if problems arise. These efforts should begin with an understanding of the behavior of individual fasteners, recognizing the interaction of the material properties of the fastener, clamped components, and internally threaded components, as well as the influence of coatings, lubricants, and adhesives on the performance of fasteners in bolted joints.

The following tests are typically conducted in the fastener assembly area:

Power Tool Setup

In many assembly applications threaded fasteners are tightened using a pneumatic or electric power tool. Beyond normal maintenance considerations, setting up a power tool for an assembly operation involves adjusting the tool and its controller (if outfitted) to run at a particular speed and shut off when a specified torque is reached. In the case of a torque to turn tightening strategy, it may also be necessary to set up the tool to shut off when a specified angle of turn is reached. Some modern tools, especially newer DC electric tools, may be outfitted with an internal torque sensor and angle encoder. The setup of the tool can be confirmed by running a series of tests on the tool using an external rotary torque or rotary torque-angle transducer and torque analyzer. A useful option is a joint simulator that can be adjusted to simulate the type of joint on which the tool will be used.

Performance Verification

Once a tool is installed on the line, it may be necessary to verify its performance on some periodic schedule, such as once an hour, once a shift, once a day, once a week, etc. This can be easily accomplished using a rotary torque or torque-angle transducer and a portable data collector. A series of runs can be recorded and compared to the initial setup. In this way, the tool's performance can be confirmed and continued quality assembly ensured.



Post-Assembly Audits

After the fastener is tightened it may be desirable to audit a sample of the tightened fasteners to ensure that the proper amount of torque was applied. This is done using an electronic hand torque wrench and a data collector whereby the operator applies just enough torque to get the fastener to turn. This peak torque is compared to the assembly specification to determine if the fastener was tightened acceptably or not. Some advanced post-assembly audits may include angle measurement or the patented M-Alpha analysis.

Hand Torque Wrench Calibration

Many assembly operations are completed using a hand torque wrench with a mechanical "click" feature that releases the torque momentarily when a certain level is reached. To verify that this "click" point is accurately reached, it can be tested using a stationary torque transducer and data collector. The transducer measures the torque and the data collector determines the point at which the wrench "clicked." Testing the wrench in this way lets the operator adjust the tool for best performance.

RS Technologies, a division of PCB Load & Torque, Inc., designs and manufactures a complete line of products and accessories specifically for use in all of these fastener assembly tests, including:

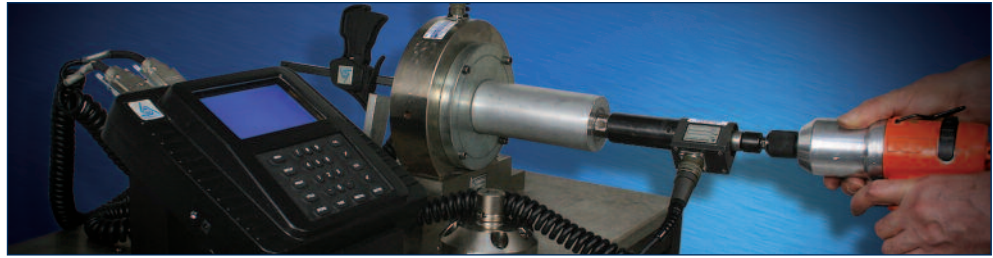
- Rotary Torque Transducers, Series PC9000
- Hand Torque Wrenches, Series HT7000
- Hand Torque-Angle Wrenches, Series HTA7000
- Stationary Torque Transducers, Series ST7000
- Force Washer Transducers, Series FT4000
- Portable Peak Meter, Model 910
- Portable Digital Transducer Instrument, Model 920
- Portable Data Recorder, Model 962
- LabMaster Portable, Model 3210
- Joint Simulators, Series JS2000



Rotary Torque Transducers for Fastener Assembly Applications

Series PC9000 Rotary Torque Sensors are widely used in the fastener assembly market to verify the performance of hand and power torque tools. The durable, strain gage-based transducers are fitted on the output drive of the hand or power tool and measure the torque applied by the tool to the fastener on an actual assembly. This measurement provides important information about tool shut off and can assist in establishing specifications for proper assembly.

When equipped with an optional angle encoder, the rotary torque transducer can also measure the angle of fastener rotation which is an important indication of joint integrity. Torque-angle transducers can provide the data to draw torque vs. time or torque vs. angle plots that can help analyze problematic joints and determine appropriate tightening strategies. These products are also a key component of a threaded fastener torque tension testing machine.



Torque Only			
Model No.	Drive Size	Capacity	
039030-50002	¼-inch Hex	32 ozf-in	(0.2 Nm)
039030-50021	¼-inch Hex	20 lbf-in	(2.3 Nm)
039025-50051	¼-inch Square	50 lbf-in	(5.7 Nm)
039030-50101	¼-inch Hex	100 lbf-in	(11.3 Nm)
039025-50101	¼-inch Square	100 lbf-in	(11.3 Nm)
039030-51015	¼-inch Hex	132 lbf-in	(15 Nm)
039025-51015	¼-inch Square	132 lbf-in	(15 Nm)
039037-50022	⅜-inch Square	200 lbf-in	(22.6 Nm)
039037-50051	⅜-inch Square	50 lbf-ft	(68 Nm)
039050-50101	½-inch Square	100 lbf-ft	(136 Nm)
039050-51201	½-inch Square	148 lbf-ft	(200 Nm)
039075-50301	¾-inch Square	300 lbf-ft	(406 Nm)
039075-51501	¾-inch Square	369 lbf-ft	(500 Nm)
039075-53601	¾-inch Square	600 lbf-ft	(814 Nm)
039001-53102	1-inch Square	1000 lbf-ft	(1356 Nm)
039001-01302	1-inch Square	2213 lbf-ft	(3000 Nm)
039001-53033	1-inch Square	3000 lbf-ft	(4068 Nm)
039001-01103	1 ½-in Square	7376 lbf-ft	(10,000 Nm)
039025-00183	2 ½-in Square	18,000 lbf-ft	(24,000 Nm)

Specifications	
Torque	
Output at Rated Capacity	2 mV/V ≤ 0.25% FS
Shunt Calibration	Matched 2mV/V ≤ 0.25% with 43.575 kOhm Precision Resistor
Interchangeability	Matched for mV/V and Shunt Calibration ≤ 0.30% FS
Non-Linearity	≤ 0.25% FS
Hysteresis	≤ 0.25% FS
Excitation Voltage [1]	10 VDC
Bridge Resistance	350 Ohm
Compensated Temperature Range	+70 to +150°F +21 to +66°C
Operating Temperature Range	0 to +200°F -18 to +93°C
Connector	PT02H-12-10P

Angle	
Magnetic Encoder	1/4 inch, 3/8 inch and 1/2 inch Drive – 360 Poles 3/4 inch Drive – 540 Poles 1 inch and 1-1/2 inch Drive – 720 Poles 2-1/2 inch Drives – 900 Poles
Output	A-B Track 90 Degrees Phase Difference Flat Over Operating Speed Range
Counts Per Resolution (CPR), Resolution w/Quadrature	1/4 inch, 3/8 inch, 1/2 inch Drive – 1440, 1/4 Degree 3/4 inch Drive – 2160, 1/6 Degree 1 inch and 1-1/2 inch Drive – 1/8 Degree 2-1/2 inch Drive – 1/10 Degree
Output Voltage	High 5.0V, Low 0.5V
Power Required	5 VDC @ 120 mA Maximum

Recommended Maximum RPM	
¼-inch Drive	5000
⅜-inch Drive	2500
½-inch Drive	2500
¾-inch Drive	2000
1-inch Drive	1000
1 ½-inch Drive	750
2 ½-inch Drive	500

Supplied Accessories
Shunt Calibration Resistor, & A2LA Accredited Calibration Certificate

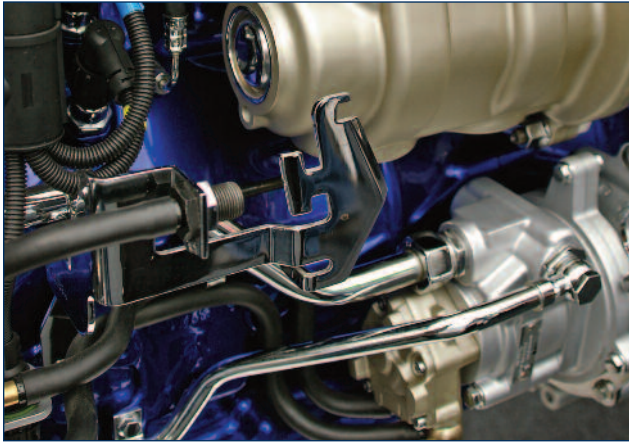
Recommended Accessories	
Model 920 Portable Digital Transducer	080920-01000
Model 962 Data Recorder	080962-01000
Cable Assembly, 10' Coiled, PT to DB15 Male	097000-34445
Mating Connector	PT06A-12-10S(SR)

Note
[1] Calibrated at a 10 VDC, usable 5 to 20 VDC or VAC RMS

Torque-Angle			
Model No.	Drive Size	Capacity	
039230-50002	¼-inch Hex	32 ozf-in	(0.23 Nm)
039230-50021	¼-inch Hex	20 lbf-in	(2.3 Nm)
039225-50051	¼-inch Square	50 lbf-in	(5.7 Nm)
039230-50101	¼-inch Hex	100 lbf-in	(11.3 Nm)
039225-50101	¼-inch Square	100 lbf-in	(11.3 Nm)
039230-51015	¼-inch Hex	132 lbf-in	(15 Nm)
039225-51015	¼-inch Square	132 lbf-in	(15 Nm)
039237-50022	⅜-inch Square	200 lbf-in	(22.6 Nm)
039237-50051	⅜-inch Square	50 lbf-ft	(68 Nm)
039250-50101	½-inch Square	100 lbf-ft	(136 Nm)
039250-51201	½-inch Square	148 lbf-ft	(200 Nm)
039275-50301	¾-inch Square	300 lbf-ft	(406 Nm)
039275-51501	¾-inch Square	369 lbf-ft	(500 Nm)
039275-53601	¾-inch Square	600 lbf-ft	(814 Nm)
039201-53102	1-inch Square	1000 lbf-ft	(1356 Nm)
039201-01302	1-inch Square	2213 lbf-ft	(3000 Nm)
039201-53302	1-inch Square	3000 lbf-ft	(4068 Nm)
039301-01103	1 ½-in Square	7376 lbf-ft	(10,000 Nm)
039625-00183	2 ½-in Square	18,000 lbf-ft	(24,000 Nm)



	Dimensions (in.)									
	1/4 inch Hex	1/4 inch Square	3/8 inch	1/2 inch	3/4 inch	1 inch (1000 lbf-ft)	1 inch (2213 lbf-ft)	1 inch (3000 lbf-ft)	1-1/2 inch	2-1/2 inch
Overall Length	4.25	3.23	3.23	3.23	4.13	4.00	4.42	4.33	5.50	9.48
Housing Length	2.30	2.30	2.30	2.30	2.69	2.00	2.42	2.44	2.63	4.62
Housing Height	2.00	2.00	2.00	2.00	2.94	3.63	3.63	4.74	4.88	7.25
Housing Width	1.50	1.50	1.50	1.50	2.50	3.25	3.25	3.88	4.26	6.50
Male Drive Length	0.98	0.29	0.42	0.58	0.84	1.06	1.06	1.12	1.60	2.25



Hand Torque Wrenches for Fastener Assembly Applications

Series HT7000 Electronic Hand Torque Wrenches are lightweight, yet durable enough to be used in the toughest industrial environments. The narrowed head is ideal for access when space is at a premium. The comfortable foam handgrip allows for operator comfort. These wrenches are available with an optional tri-color LED, and when used with Model 920 Portable Digital Transducer Instrument, provide inspec/out-of-spec feedback to the operator.



Standard Hand Torque Wrenches				
Model No.	Capacity	Drive Size	Length	Weight
027025-04021	20 lbf-in 2.3 Nm	¼-inch Hex	6.25 in 159 mm	4.8 oz 136 gm
027025-04061	60 lbf-in 6.8 Nm	¼-inch Hex	6.25 in 159 mm	4.8 oz 136 gm
027125-04051	50 lbf-in 5.6 Nm	¼-inch Square	8.00 in 203 mm	11.2 oz 318 gm
027125-04012	100 lbf-in 11.4 Nm	¼-inch Square	8.00 in 203 mm	11.2 oz 318 gm
027137-04022	200 lbf-in 22.7 Nm	⅜-inch Square	12.00 in 305 mm	12.8 oz 363 gm
027137-04051	50 lbf-ft 67.8 Nm	⅜-inch Square	12.00 in 305 mm	12.8 oz 363 gm
027250-04101	100 lbf-ft 135.6 Nm	½-inch Square	21.00 in 540 mm	1.8 lb 816 gm
027250-04201	200 lbf-ft 271.2 Nm	½-inch Square	21.00 in 540 mm	1.8 lb 816 gm
027250-04301	300 lbf-ft 407.0 Nm	½-inch Square	28.00 in 711 mm	3.2 lb 1.5 kg
027375-04501	500 lbf-ft 678.0 Nm	¾-inch Square	44.00 in 1118 mm	6.5 lb 3.0 kg
027375-04601	600 lbf-ft 813.6 Nm	¾-inch Square	44.00 in 1118 mm	6.5 lb 3.0 kg

Hand Torque Wrenches with LEDs				
Model No.	Capacity	Drive Size	Length	Weight
027125-03012	100 lbf-in 11.4 Nm	¼-inch Square	8.00 in 203 mm	11.2 oz 318 gm
027137-03022	200 lbf-in 22.7 Nm	⅜-inch Square	12.00 in 305 mm	12.8 oz 363 gm
027137-03051	50 lbf-ft 67.8 Nm	⅜-inch Square	12.00 in 305 mm	12.8 oz 363 gm
027250-03101	100 lbf-ft 135.6 Nm	½-inch Square	21.00 in 540 mm	1.8 lb 816 gm
027250-03201	200 lbf-ft 271.2 Nm	½-inch Square	21.00 in 540 mm	1.8 lb 816 gm
027250-03301	300 lbf-ft 407 Nm	½-inch Square	28.00 in 711 mm	3.2 lb 1.5 kg
027375-03501	500 lbf-ft 678 Nm	¾-inch Square	44.00 in 1118 mm	6.5 lb 3.0 kg

Common Specifications	
Output at Rated Capacity	2 mV/V $\leq 0.25\%$ FS
Shunt Calibration	2 mV/V with 43.575 kOhm Precision Resistor
Interchangeability	Matched for mV/V and Shunt Calibration $\leq 0.3\%$ FS
Overload Capacity	150% FS
Non-linearity	$\leq 0.25\%$ FS
Hysteresis	$\leq 0.25\%$ FS
Excitation Voltage	10 VDC Maximum
Bridge Resistance	350 Ohm
Compensated Temperature Range	+70 to +150 °F +21 to +66 °C
Operating Temperature Range	0 to +200 °F -18 to +93 °C
Temperature Effect on Zero	$\pm 0.01\%$ FS/°F $\pm 0.018\%$ FS/°C
Temperature Effect on Output	$\pm 0.001\%$ Reading/°F $\pm 0.0018\%$ Reading/°C
Connector	PT02H-8-4P

Supplied Accessories
Shunt Calibration Resistor, & A2LA Accredited Calibration Certificate

Recommended Accessories	
Model 920 Portable Digital Transducer Instrument	080920-01000
Standard Hand Torque Wrench Cable Assembly, 10' Coiled, PT to DB15 Male Mating Connector, Standard	097000-34149 4242R-000600 / PT06A-8-4S
Hand Torque Wrench with LEDs Cable Assembly, 10' Coiled, PT to DB15 Male Mating Connector, Standard	097000-34445 4242R-000630



Hand Torque-Angle Wrenches for Fastener Assembly Applications

Series HTA7000 Hand Torque-Angle Wrenches are rugged and lightweight, yet durable enough to be used in the toughest industrial environments, and the narrowed head is ideal for access when space is at a premium. With high-resolution angle measurement, these wrenches are ideal for troubleshooting bolted joints and torque-angle audits using Torque Angle Signature Analysis techniques as well as employing the M-Alpha Audit Method patented by RS Technologies. Equipped with an ID chip, setup and calibration is quick and easy when used with instruments from RS Technologies, such as the Model 962 Portable Data Recorder and the Model 920 Portable Digital Transducer Instrument.



Common Specifications	
Output at Rated Capacity	2 mV/V $\leq 0.25\%$ FS
Shunt Calibration	2 mV/V with 43.575 kOhm Precision Resistor
Interchangeability	Matched for mV/V and Shunt Calibration $\leq 0.3\%$ FS
Overload Capacity	150% FS
Non-linearity	$\leq 0.25\%$ FS
Hysteresis	$\leq 0.25\%$ FS
Excitation Voltage	10 VDC Maximum
Bridge Resistance	350 Ohm
Operating Temperature Range	+70 to +150 °F +21 to +66 °C
Useable Temperature Range	0 to +200 °F -18 to +93 °C
Temperature Effect on Zero	$\pm 0.01\%$ FS/°F $\pm 0.018\%$ FS/°C
Temperature Effect on Output	$\pm 0.001\%$ Reading/°F $\pm 0.0018\%$ Reading/°C
Connector	PT02H-12-10P
Recommended Accessories	
Model 920 Portable Digital Transducer Instrument	080920-01000
Model 962 Portable Data Recorder	080962-01000
Cable Assembly, 10' Coiled, PT to DB15 Male	097000-34445
Mating Connector, Standard	4242R-000630 PT06A-12-105 (SR)



Hand Torque-Angle Wrenches				
Model No.	Capacity	Drive Size	Length	Weight
027125-07012	100 lbf-in (11 Nm)	¼-inch Square	8 in (203 mm)	11.2 oz (318 gm)
027137-07022	200 lbf-in (23 Nm)	⅜-inch Square	12 in (305 mm)	12.8 oz (363 gm)
027137-07051	50 lbf-ft (68 Nm)	⅜-inch Square	12 in (305 mm)	12.8 oz (363 gm)
027250-07101	100 lbf-ft (136 Nm)	½-inch Square	21 in (540 mm)	1.8 lb (816 gm)
027250-07201	200 lbf-ft (271 Nm)	½-inch Square	21 in (540 mm)	1.8 lb (816 gm)
027250-07301	300 lbf-ft (407 Nm)	½-inch Square	28 in (711 mm)	3.2 lb (1.5 kg)
027375-07501	500 lbf-ft (678 Nm)	¾-inch Square	44 in (1118 mm)	6.5 lb (3.0 kg)



Stationary Torque Transducers for Fastener Assembly Applications

Series ST7000 Stationary Torque Transducers are ideal for auditing and certifying power tools and hand torque wrenches when used with Model 920 Portable Digital Transducer Instrument. Model 920 is a battery-operated, hand-held peak meter with a single torque input. Together, Series ST7000 and Model 920 can measure peak torque and its special "click" wrench feature makes it easy to use for calibrating mechanical "click" type wrenches. It is a cost-effective, versatile, and easy to use data collector and can record up to 300 rundowns. Its alphanumeric setup and calibration menus assure ease of operation. With optional Run Down Adaptors, Series ST7000 Stationary Torque Transducers can verify the performance of pneumatic and electronic power tools.

Stationary Torque Tool Transducer			
Model No.	Drive Size	Capacity	Outer Diameter x Height
077025-00012	1/4-inch Square	100 lbf-in (11 Nm)	4.00 in x 1.75 in (101.60 mm x 44.45 mm)
077037-00022	3/8-inch Square	200 lbf-in (23 Nm)	4.00 in x 1.75 in (101.60 mm x 44.45 mm)
077037-00051	3/8-inch Square	50 lbf-ft (68 Nm)	4.00 in x 1.75 in (101.60 mm x 44.45 mm)
077050-00101	1/2-inch Square	100 lbf-ft (136 Nm)	4.00 in x 1.75 in (101.60 mm x 44.45 mm)
077050-00201	1/2-inch Square	200 lbf-ft (271 Nm)	4.00 in x 1.75 in (101.60 mm x 44.45 mm)
077075-00501	3/4-inch Square	500 lbf-ft (678 Nm)	4.00 in x 2.13 in (101.60 mm x 54.10 mm)

Common Specifications	
Output	2 mV/V
Shunt Calibration	Matched 2 mV/V with 43.575 kOhm Precision Resistor
Overload Capacity	150% of FS
Non-linearity	≤0.25% FS
Hysteresis	≤0.25% FS
Zero Balance	≤2.00% FS
Excitation, Recommended	10 VDC or AC (RMS)
Bridge Resistance	350 Ohms
Compensated Temperature Range	+70 to +150 °F +21 to +66 °C
Operating Temperature Range	0 to +200 °F -18 to +93 °C
Temperature Effect on Zero	±0.01% FS / °F ±0.018% FS / °C
Temperature Effect on Output	±0.01% Reading / °F ±0.018% Reading / °C
Connector	PT02H-8-4P

Supplied Accessories
Square Drive Adapter, Shunt Calibration Resistor, & A2LA Accredited Calibration Certificate

Recommended Accessories	
Mating Connector	4242R-000600 PT06A-8-4S(SR)
Model 920 Portable Digital Transducer Instrument	080920-0100
Cable Assembly, 10' Coiled, PT to DB15 Male	097000-34149



Model 077037-00051

Optional Rundown Adapters		
Model No.	Drive Size	Capacity Range
92300-063971	1/4-inch Square	2 to 25 lbf-in 0.3 to 2.3 Nm
92300-063972	1/4-inch Square	5 to 50 lbf-in 0.5 to 5.6 Nm
92300-063973	1/4-inch Square	10 to 100 lbf-in 1.1 to 11.3 Nm
92300-063978	3/8-inch Square	5 to 50 lbf-ft 6.8 to 67.8 Nm
92300-063981	1/4-inch Square	10 to 100 lbf-ft 13.6 to 135.6 Nm
92300-063982	1-inch Square	25 to 250 lbf-ft 33.9 to 339.0 Nm
92300-063983	3/4-inch Square	50 to 500 lbf-ft 67.8 to 678.0 Nm



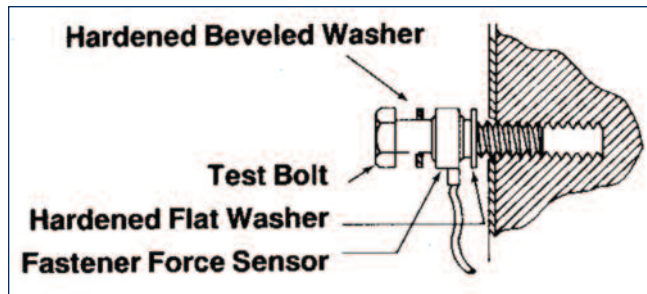
Force Washers for Fastener Assembly Applications

Series FT4000 Force Washer Transducers are miniature load cells designed specifically for measuring fastener clamping forces. The design provides high stiffness in a small package, making these load cells ideal for static and dynamic measurements on fasteners, or structural test applications where space limitations exist. Force washer transducers come in a variety of English and Metric sizes.

All transducers are carefully sealed and thoroughly tested prior to shipment. Two hardened steel washers are provided with each unit and should be mounted on both sides of the transducer to minimize any transmitted rotational effects or spot loading. Please refer to the illustration below more information.

Series FT4000 Force Washer Transducers can be used along with rotary torque or torque-angle torque sensors and a data acquisition instrument to acquire fastener testing data; Model 962 Portable Data Recorder is recommended. If fastener clamp load alone is required, Model 920 Portable Digital Transducer Instrument can quickly capture and record the data.

NOTE: Fastener Force Washers are not designed for use as high-accuracy clamp force measurement devices.



Common Specifications

Construction	Steel Flexure, Aluminum Cover
Output at Rated Capacity	1.5 mV/V Nominal
Overload Capacity	150% FS
Non-linearity	±5.0% FS
Hysteresis	±5.0% FS
Zero Offset	±5.0% FS
Excitation Voltage	10 VDC, Maximum
Bridge Resistance	350 Ohms
Operating Temperature Range	0 to +200 °F -18 to +93 °C

Supplied Accessories

One Pair Hardened Grounded Washers, Shunt Calibration Resistor, & A2LA Accredited Calibration Certificate

Recommended Accessories

Connector, DB15 Male	42220-001250
Strain Relief	42230-003200
Model 920 Portable Digital Transducer Instrument	080920-01000
Model 962 Portable Data Recorder	080962-01000

English Sizes

Model No.	Size	Inner Diameter	Outer Diameter	Height	Capacity
054103-01252	#10	0.196 in (5.0 mm)	0.682 in (17.3 mm)	0.255 in (6.5 mm)	2500 lbf (11.1 kN)
054104-01502	1/4 inch	0.256 in (6.5 mm)	0.674 in (17.1 mm)	0.255 in (6.5 mm)	5000 lbf (22.2 kN)
054105-01802	5/16 inch	0.319 in (8.1 mm)	0.809 in (20.5 mm)	0.317 in (8.1 mm)	8000 lbf (35.6 kN)
054106-01103	3/8 inch	0.381 in (9.7 mm)	0.842 in (21.3 mm)	0.380 in (9.7 mm)	10 klbf (44.5 kN)
054107-01153	7/16 inch	0.443 in (11.2 mm)	0.943 in (23.9 mm)	0.420 in (10.7 mm)	15 klbf (66.7 kN)
054108-01203	1/2 inch	0.506 in (12.8 mm)	1.111 in (28.2 mm)	0.455 in (11.6 mm)	20 klbf (89.0 kN)
054109-01253	9/16 inch	0.569 in (14.5 mm)	1.213 in (30.8 mm)	0.495 in (12.6 mm)	25 klbf (111.2 kN)
054110-01303	5/8 inch	0.631 in (16.0 mm)	1.348 in (34.2 mm)	0.525 in (13.3 mm)	30 klbf (133.4 kN)
054112-01403	3/4 inch	0.756 in (19.2 mm)	1.618 in (41.1 mm)	0.595 in (15.1 mm)	40 klbf (177.9 kN)
054114-01603	7/8 inch	0.881 in (22.4 mm)	1.888 in (48.0 mm)	0.665 in (16.9 mm)	60 klbf (266.9 kN)
054116-01803	1 inch	1.006 in (25.5 mm)	2.158 in (54.8 mm)	0.735 in (18.7 mm)	80 klbf (355.6 kN)

Metric Sizes

054206-01203	M6	6.16 mm (0.243 in)	17.12 mm (0.674 in)	6.48 mm (0.255 in)	20 kN (4496 lbf)
054208-01353	M8	8.16 mm (0.321 in)	20.52 mm (0.808 in)	9.65 mm (0.380 in)	35 kN (7869 lbf)
054210-01543	M10	10.16 mm (0.400 in)	23.95 mm (0.943 in)	10.67 mm (0.420 in)	54 kN (12 klbf)
054212-01084	M12	12.16 mm (0.479 in)	28.22 mm (1.111 in)	11.56 mm (0.455 in)	80 kN (18 klbf)
054214-01114	M14	14.16 mm (0.557 in)	30.81 mm (1.213 in)	12.57 mm (0.495 in)	110 kN (25 klbf)
054216-01144	M16	16.16 mm (0.636 in)	34.24 mm (1.348 in)	13.34 mm (0.525 in)	140 kN (31 klbf)
054218-01184	M18	18.16 mm (0.715 in)	41.14 mm (1.620 in)	15.11 mm (0.595 in)	180 kN (40 klbf)
054220-01224	M20	20.16 mm (0.794 in)	41.14 mm (1.620 in)	15.11 mm (0.595 in)	220 kN (49 klbf)
054222-01274	M22	22.16 mm (0.872 in)	47.95 mm (1.888 in)	16.89 mm (0.665 in)	270 kN (61 klbf)
054224-01324	M24	24.16 mm (0.951 in)	54.86 mm (2.160 in)	18.67 mm (0.735 in)	320 kN (72 klbf)
054230-01404	M30	30.18 mm (1.188 in)	71.45 mm (2.813 in)	25.40 mm (1.000 in)	400 kN (90 klbf)



Model 910

Portable Peak Meter for Fastener Assembly Applications

Model 910 Portable Peak Meter is a versatile, battery-powered, single channel meter designed to monitor and store peak readings from torque or force transducers. The meter has five peak memories to store and recall the peak or maximum torque or force on five cycles. The track mode is used when peak hold is not needed, such as during calibration or when it is desirable to view the transducer output continuously. The span adjustment allows the peak or track readings to be in direct engineering units. The unit offers manual zero adjustment. A nickel-cadmium rechargeable battery offers eight hours of continuous operation before requiring a charge. Model 910 can accommodate most transducers with output ranging from 0.8 to 5.0 mV/V. The unit features external shunt calibration resistors to calibrate, and a switch which allows the measurement of torque in a counter-clockwise direction.

Model 910 is specifically designed to operate with PCB Load & Torque, Inc. strain gage load cells, since it can read force in numerous engineering units. For example, Model 910 Portable Peak Meter can be used with a PCB® pedal force load cell for vehicle braking tests.

When used with PCB® Stationary Torque Transducers, Model 910 Portable Peak Meter displays applied hand torque.

Portable Peak Meter, Model 910	
Instrument Accuracy	±0.5% FS
Non-linearity	±0.5 % FS
Temperature Range	0 to +60°C -18 to +16°F
Battery	8 Hour Life
Recharger	120 VAC, 14 Hours for Complete Recharge
Input Sensitivity	350 to 1000 Ohm, Full Bridge
Input Signal	0.8 to 5.0 mV/V
Display	0.6-in High LED, 3 ½-digits, 1999 Maximum Display
Operating Modes	Peak, Track
Bridge Excitation	10 VDC
Frequency Response	DC to 3200 Hz
Peak Memory Drift	Less than 1.0% FS in 15 Minutes
Calibration	Binding Posts for External Resistor
Output Jack	±2.0 VDC
Size (H x W x D)	9.5 x 4.2 x 2.8 in 241 x 107 x 71 mm
Weight	1.4 lb 635 gm
Supplied Accessories	
Shoulder Strap, Battery Charger, Instruction Manual, & A2LA Accredited Calibration Certificate	





Portable Digital Transducer, Model 920

A/D Resolution	16-bit
Accuracy	±0.500% FS Peak Mode, ±0.5% FS Track Mode
Angle Input	Quadrature, A/B Track
Angle Resolution	Transducer CPR Dependant
Bridge Excitation	5 VDC
Calibration	External Binding Posts
Communications Port	RS232 Serial for Printout or Upload to Computer via HyperTerminal
CW/CCW Operation	Software Selectable
Data Memory	Automatic Storage of 300 Peak Torque Angle or Force Readings, Scrolling Feature for Viewing Readings, Last Reading Deletable
Dimensions (L x W x H)	2.750 x 4.375 x 8.500 in 70 x 111 x 216 mm
Display	LCD, 20 Alphanumeric Characters by 4 Lines with 5-digit Readout Plus 6-digits for Angle
Enclosure	High Impact Plastic with Shoulder Strap
Engineering Units	Software Selectable (lbf-ft, lbf-in, ozf-in, kgcm, kgm, lb, and N)
Frequency Response	Software Selectable Filter 500 and 1000 Hz or Off (3200 Hz)
Humidity	5 to 95% N.C.
Input Power	Nickel-Metal Hydride (NiMH) Battery, AC Battery Charger 115/220 VAC, Low Battery Charge Warning
Input Signal	Compatible with Conventional Strain Gage Transducer with Outputs Ranging from 0.8 to 5.0 mV/V and with High Level Devices up to ±5 VDC
Keypad	16-key Numeric and Special Function
Maximum Angle Count	10k Degrees
Operating Temperature	0 to +55 °C +32 to +131 °F
Options	Multiple Limit Sets
Printout	Transducer and Limits Data, Time and Date Stamped Peak Data, Angle at Peak (if Used), and Statistics
Recommended Recalibration	Yearly
Statistics	High, Low, Mean, Standard Deviation, ±3 Sigma, Cpk, and Cp; Calculations Based on Software Selectable Sample Size or Entire Population
Weight	1.5 lb 680.4 gm
Supplied Accessories	
Battery Charger, Shoulder Strap, Instruction Manual, & Calibration Certificate	
Recommended Accessories	
Serial Communications Cable, & Local Serial Printer	



Model 920

Portable Digital Transducer Instrument for Fastener Assembly Applications

Model 920 Portable Digital Transducer Instrument fits comfortably in the hand, and is both powerful and accurate enough to be used as a primary standard for auditing most torque applications in manufacturing and quality departments. When connected to a Rotary Torque Transducer, the unit can be used to test the capability of power tools, verify the accuracy of hand tools, monitor the capability of a fastening process, or audit the quality of an assembled joint. Model 920 can also be easily set up for use with force washers, clamp force sensors, and other transducers to measure fastener assembly preload, press force, pressure, and numerous other applications.

Model 920 can monitor and record data quickly, easily, and accurately. The alphanumeric display is easy to read and prompts you through setup and operation as needed. The unit displays peak and track torque or force simultaneously and measures in either the clockwise or counterclockwise (compression or tension) direction. The unit can also read the auto ID chip in RS Technologies' transducers to simplify set up. The built-in serial port allows for printing data and statistics right from the unit. The recorded data can also be uploaded to a personal computer for further analysis using the HyperTerminal application provided with Windows® operating system.



Portable Digital Transducer Instrument with Optional Cable (097000-34445)



Back Panel



Product Features:

- USB Ports
- Analog Outputs
- Streamlined Menu System
- Tactile Feel Keypad
- Torque or Force Threshold
- External Shunt Calibration Resistors

Portable Data Recorder for Fastener Assembly Applications

Model 962 Portable Data Recorder is a battery-operated, transient recorder with two transducer inputs that can be used with torque-only, torque-angle, or force transducers. It can serve as a portable threaded fastener laboratory for measuring fastener torque, angle of turn, and clamp load. Ideal for performing fastener analysis, for auditing and certifying power tools, and for testing hand torque wrenches; Model 962 is a cost effective, versatile, and easy-to-use recorder that can collect numeric peak data, XY graphic plots, and store on a thumb drive. The data can be easily displayed or printed on a PC running FastPlot2 software. The alphanumeric setup and calibration menus assure ease of operation, and the unit can be used with all RS Technologies' rotary torque-angle and clamp force transducers and other conventional and industry-standard strain gage transducers.

Statistics

After three rundowns, Model 962 Portable Data Recorder updates statistics including standard deviation and Cpk. It also flags data as being high or low depending upon the programmed engineering limits.

Data and Communications

Graphic plots, numeric data reports, and statistics are printed via the parallel port. Recorded data can be downloaded to a PC via the serial port for further analysis using the optional FastPlot2 software. Program updates are easily uploaded through the USB port.

Real-Time Plotting Capabilities

Model 962 captures real-time and peak readings for torque-angle, torque-clamp load, or torque-time and immediately displays or plots one of the following, based upon the instrument setup:

- Torque vs. Time
- Torque vs. Angle
- Torque & Angle vs. Time
- Torque & Clamp Force vs. Time
- Torque and Clamp Force vs. Angle
- Clamp Force vs. Torque
- Tool RPM vs. Time
- Tool RPM vs. Angle

Portable Data Recorder, Model 962

Torque and Force Input Channels

Input Range	±2.5 mV/V, ±4.5 mV/V, ±5 VDC
Excitation	5 VDC, 120 mA Maximum
Resolution	21-bit
Non-linearity	0.25% Maximum (F.S.)
Frequency Response	10 kHz
Positive Voltage Peak Trap Circuit	7 ms Reset Time
Peak Threshold	Software Programmable
Peak Reset	Manual or, Software Programmable (Automatic Reset)

Angle Input Channel

Type	Quadrature A/B Track
Excitation	5 VDC
Input Frequency	1000 kHz Maximum

Display

Viewing Area	4.85 x 2.68 in 123 x 68 mm
Resolution	240 x 128 Pixels, Backlit LCD

Battery

Indication	Battery Low Indication
Battery Life	8 Hours Maximum, Continuous Use
Charge Time	3.5 Hours, Maximum

General

Temperature Range	+32 to +158 °F 0 to +70 °C
-------------------	-------------------------------

Dimensions

Size (W x D x H)	10.12 x 8.50 x 3.25 in 257.0 x 215.9 x 85.1 mm
Weight	6.0 lb 2700 gm

Mating Connectors

Channel 1 and Channel 2	DB, 15 Pins
TTL/IO	DB, 25 Pins
USB Port A	A Type
USB Port B	B Type

Supplied Accessories

FastPlot2 Upload/Graphing Utility for PC Running Windows® 2000, XP, Battery Charger, Serial Cable with USB Adapter, Instruction Manual, Carrying Case, & A2LA Accredited Calibration Certificate





LabMaster Portable for Fastener Assembly Applications

Model 3210 LabMaster Portable, is a an advanced, multi-purpose system designed to test threaded fasteners, analyze bolted joints, and certify power tools. The system is comprised of two components: the LabMaster Portable module, which contains four channels of signal conditioning and data acquisition, as well as a laptop or desktop PC running the LabMaster for Windows® testing software. The module and computer interface using a USB port.

Employing full Windows® functionality with drop-down menus and point-and-click features, the LabMaster for Windows® software provides a user-friendly graphic interface. Quickly make changes to existing test setups, easily select different tools and transducers, or view results of previous tests. An easily accessed transducer parameter and test setup directory further simplifies testing setup.

Once the test is set up, the LabMaster Portable module conducts all of the data acquisition operations. The recorded data are then displayed and managed on the computer for access to network printers, archiving, and communications.

Four analog inputs are available on the LabMaster Portable module to accept data signals from the following:

- Transducers
- Strain gages
- Load cells
- Torque cells
- Force washers
- Bolt extensometers
- Ultrasonic devices
- Any 10 volt analog device

The LabMaster Portable includes a data acquisition card which provides high-speed sampling of up to 4000 kHz (software selectable). Sampling is done on a time or angle basis.

A LabMaster Portable system with a torque-tension research head and a torque-angle sensor can measure and calculate the following:

- Input torque
- Clamp force
- Thread friction torque
- Underhead friction torque
- Angle of fastener rotation
- Torque tension coefficient ($T = KDF$)
- Thread friction coefficient
- Underhead friction coefficient

The LabMaster Portable offers a variety of statistical reports in numeric and graphic form. Statistical plot of ± 3 Sigma provides insightful data summaries.

The LabMaster Portable and the LabMaster for Windows® testing software provide realtime display during the test. A user-selectable automatic "Data Save" feature for both numeric and graphic data speeds technician testing time.

After the test is completed, rundown data and plots may be viewed on the computer display, printed as hard copy, and/or saved for later data analysis. Numerous configurable plots can be generated.

A joint analysis system will typically include a rotary torque-angle transducer, a thread torque-tension research head, and a printer for numeric and graphic data reports, all of which are available from RS Technologies.

Optional features include an auxiliary input for an ultrasonic interface, and a tablet or mobile test cart.



LabMaster Portable

Inputs

Four Inputs for Transducers, Load Cells and/or Other Devices
 USB Port for Connection to Desktop or Laptop Computer Running LabMaster for Windows® Software

Analog Input

Number of Channels	4
Signal Conditioning	Full Bridge, Strain Gage, Transducer Compatible
Sensitivity	1 mV/V to 4 mV/V, and ± 10 VDC
Excitation	10 VDC

Encoder Input

Number of Channels	1
Counter Resolution	32-bit
Input Frequency	1000 kHz Maximum
Excitation	5 VDC

Computer Requirements

Windows® 2000, XP, or 7
 2 GB RAM
 60 GB Hard Drive
 CD-ROM Drive
 USB 2.0 Port

Power Requirement

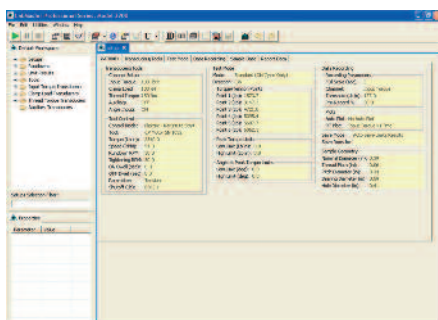
110 VAC

Supplied Accessories

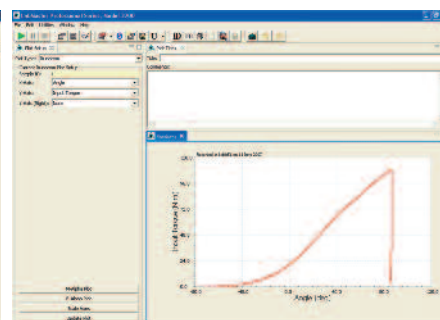
Power Cord, USB Cable, Testing Software Installation Discs, Instruction Manual, & A2LA Accredited Calibration Certificate

Recommended Accessories

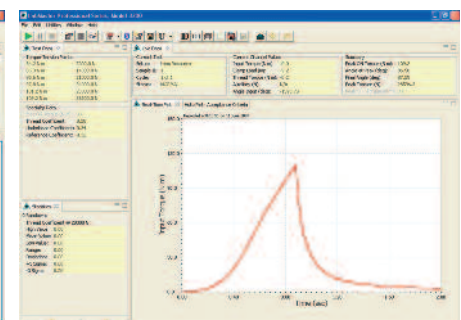
Rotary Torque Angle Transducer, Threaded Torque - Fastener Tension Load Cell, & Fastener Force Washers



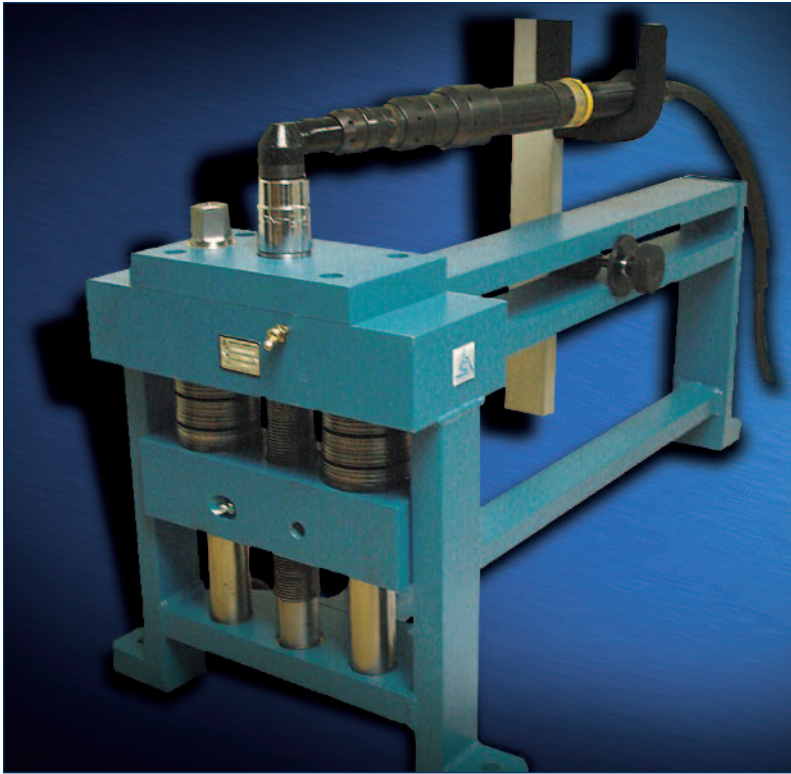
Setup Summary Screen



Real-Time Plot Screen



Graphic Data Screen



Joint Simulators for Fastener Assembly Applications

Series JS2000 Joint Simulators are ideal for calibrating and certifying pneumatic and electric power tools. These devices are rugged and durable enough for use in tool calibration and repair operations, and feature sturdy welded aluminum construction with an adjustable reaction bar mounting to accommodate most power tools. The durable aluminum spring washers are easily configured to simulate soft, hard, or medium joint rates. High quality bushings are used throughout to minimize the effects of friction. All units feature a reversing drive to reset the simulator for the next test.



Model 920 Portable Digital Transducer Instrument

Joint Simulator			
Model No.	Capacity	Size (H x W x D)	Weight
102000-02201	15 to 148 lbf-ft 20 to 200 Nm	14.75 x 27.50 x 14.00 in 374.65 x 698.50 x 355.60 mm	35 lb 16 kg
102004-02451	74 to 332 lbf-ft 100 to 450 Nm	16.25 x 36.50 x 16.00 in 412.75 x 927.10 x 406.34 mm	45 lb 20 kg

Recommended Accessories	
Model 920 Portable Digital Transducer Instrument	080920-01000
Model 962 Portable Data Recorder	080962-01000
PC9000 Rotary Torque Transducer	039250-51201
PC9000 Rotary Torque Transducer	039275-51501
Cable Assembly, 10' Coiled, PT to DB15 Male	097000-34445

CE



Model 962 Portable Data Recorder

CE



PC9000 Rotary Torque Transducer



Cable



Tight Is Not Always Right

**Torque control can ensure
quality assemblies**

Threaded fasteners have been around and used to assemble a variety of products for so long that it is often assumed that everything is known about them. This confident assumption often leads operators to tighten a given fastener until it “feels” tight and they are done with it. In some applications this approach may prove satisfactory, but with critical applications, which can impact a financial bottom line through costly rework or warranty repairs, the old “feels tight, must be right” method is inadequate.

Fasteners of various types can account for as much as 50% of the parts count in a typical bill of materials, so it is important that the correct fasteners are used properly to ensure product quality and efficient manufacturing. In addition, great strides have been made in developing new materials and implementing them into new products. How these components perform when the fastener is tightened must be thoroughly researched before a quality assembly can be ensured.

Modern computer software and engineering analysis methods have been developed to provide fastener design engineers with some powerful tools for performing threaded fastener analysis. The accuracy of test and measurement equipment has been improved to aid in the testing of threaded fasteners. Yet, after the product has been designed and the best fasteners are chosen, it all comes down to correct installation, and no manufacturer in these competitive times can afford to have the wheels fall off their cart.

Traditionally, torque has been used as the most practical means of determining the correct assembly of a bolted joint. It is relatively easy to measure torque either dynamically during the assembly or statically via a post assembly audit. For many non-critical fasteners, this method has proven sufficient. However, in critical assemblies that potentially impact safety or product warranty issues, and for products where assembly conditions are not tightly controlled, measuring torque alone may not be adequate as a means of determining joint integrity.



Torque as an Energy Transfer Process

What happens when a threaded fastener is tightened? Applying torque to a threaded fastener with a hand or power tool in order to hold the assembly together is an energy transfer process. Operators apply a specified amount of force at a distance to turn the fastener to a certain point. For example, Newton-meters expresses a value of force measured in Newtons applied at a distance measured, in meters; in the United States the common measurement of foot-pounds (lb-ft) is an expression of force in pounds applied at a distance measured in feet. Practice and experimentation has proven that the energy that is used to turn the fastener is transferred into clamping force that ultimately holds the parts together.

When a fastener is tightened, operators often use a torque-measuring device to determine the amount of energy that is being applied to the fastener, such as with a hand torque wrench or a rotary torque sensor used on the output end of a power tool. In fact, most modern power tools come with some torque measurement capability already built into them.

Consider the following scenario: The quality inspector asks, "How tight is that fastener?" The operator, answers, "I tightened it to 50 lbf-ft" The quality inspector compares the reading to the engineering specification, which requires that the fastener be torqued to 50 lbf-ft and pronounces the assembly satisfactory.

The only problem is that their torque measurement during the assembly process or through an audit after the fact told them only how much energy was used to turn the fastener, not how much of that energy was actually transferred into clamping the assembly together. The specified effort was put into tightening the fastener and the tool did its job, but is that good enough to hold the product together?

The answer lies in predicting or determining how much clamp load was produced when the fastener was tightened. This is a significant challenge because there is no direct way to measure clamp load in the actual assembly.

Clamp load is the amount of pressure that holds two or more parts together in an assembly. A simple illustration is a common C-clamp used to hold a couple of wood blocks together; as operators turn the threaded section, they apply clamp load to the blocks. When they tighten a threaded fastener to hold an assembly together, they are applying clamp load to that stack up of parts. In the truest sense, it is the correct amount of clamp load that is generated that actually holds the parts together successfully, not merely the amount of energy, measured as torque, applied to the fastener. The practical problem is how to determine the amount of energy that went into holding the assembly together.

Where Does the Torque Go?

Threaded fastener analysis has shown that most of the energy applied to a fastener goes into overcoming the friction that exists under the head of the fastener and in the threads. Together, these two sources of friction can typically be as much as 80% to 90% of the applied torque energy, leaving as little as 10% of the energy to transfer into clamp load. (See Fig. 1)

In a perfect world where all of the components in the assembly are identical, including the threaded portions of the fastening system, applying a specific amount of energy to the fastener produces a corresponding amount of clamp load. However, anything that changes the process, such as a shift in the friction coefficients in the threads or under the head of the fastener, may produce a huge shift in the clamp load generated in the assembly.

The state of friction in the joint is important because it holds the fastener in place and maintains the clamp load after the assembly is complete. However, a slight change in the state of friction either under the head of the fastener or in the threads can produce a significant change in the amount of clamp load generated either more or less friction than anticipated can produce a poor assembly.

Because as much as, 90% of the torque energy is absorbed by friction in the joint, leaving only 10% of the total energy for clamp load, a 5% change in the amount of friction in the threads can increase or reduce the amount of clamp load by half – a significant shift.

For example, the presence of dirt or other contaminants on the threads can increase the amount of friction, thus reducing the clamp force and leaving a loose assembly. Conversely, an accidental drop of oil under the head of a fastener can reduce the friction and allow more energy to flow into clamp load, which can over-tighten the assembly to the point of over-stretching or fracturing the fastener, which can produce a catastrophic failure.

If torque reveals only how much energy was put into the assembly; what can tell how much clamp load is holding the assembly together? The key is simple – measuring the turn of the fastener. This is because the angle of rotation of a threaded fastener is more directly proportional to the clamp load than the measurement of torque. If operators can define the relationship of fastener rotation to clamp load in a given joint, then they can use the angle of rotation during tightening to predict the amount of clamp load that will be produced when the assembly is finished.

Because of the additional expense of angle measurement, torque-turn methods are usually reserved for only the most crucial fasteners in an assembled product. However, for non-critical fasteners, torque-only measurement and control is usually adequate. This can be achieved through monitoring the output of the tools on the assembly line through



the use of rotary torque sensors or a torque sensor built into the tool. By closely controlling installation torque, operators can monitor the amount of energy that is being put into the assembly. This verifies the performance of the tool and ensures that a consistent amount of energy was used to fasten the assembly together.

If torque is not monitored during the assembly process, performing an audit after the assembly has been completed can approximate it. This is done by applying torque to the fastener, up to the specified torque specification, thus ensuring that the correct amount of energy was used to tighten the fastener. Post-assembly torque audits are quite common in assembly operations, and serve to verify the performance of the assembly tool.

Torque and Angle Measurement

Several methods have been developed to overcome the limitations of torque-only measurement. Foremost is the torque-turn method that uses the threaded design of the screw or bolt to its best advantage. Because of the helix of the threads, fastener rotation is almost directly proportional to clamp load and can be used to determine or predict the force holding the assembly together. With this method, the fastener is tightened to a preliminary torque level, predictably sufficient to bring all of the components into alignment and contact, and then the fastener is turned a specified number of degrees to produce the correct clamp load.

The specifications for the assembly can be determined through experimental testing on the fastener and verified by testing on actual assemblies. For example, the fastener was tightened to 20 lbf-ft of torque and then turned 60 degrees. This produced 7,500 pounds of clamp load. This data was obtained during experimental testing using a rotary torque angle sensor and a clamp force load cell. (See Fig. 2)

From this data, it is calculated that 85 pounds of clamp load will be produced with each degree of fastener rotation. After this is verified through obtaining and analyzing torque-angle signatures via testing on actual assemblies, the torque-angle data recorded during the assembly process or a post-assembly audit can estimate the clamp load and ensure a more complete assessment of product quality. (See Fig. 3)

In addition to its uses in determining correct assembly methods, the examination of torque and angle data, called torque angle signature analysis, is a powerful tool for fastener engineers to analyze and troubleshoot problematic joints.

Recording torque and angle data and examining the shape and slope of the resulting curve can discover underlying problems with the assembly. Ideally, after the parts are brought into alignment, the increase of torque and angle should be a linear process producing a straight torque-angle curve. However, in the case of embedment of the head of the fastener into the surface of the part, the torque-angle signature starts out linear but begins to flatten out when a straight line is overlaid onto the plot. (See Fig. 4) Careful review of a torque-angle graph often can aid in revealing the cause of a failed assembly. Assemblies that reveal this kind of behavior require closer investigation.

How Tight is Right?

Although operators have learned much about threaded fasteners over the years, recent developments in materials and assembly processes have prompted the need for additional analysis of bolted joints to ensure a high level of quality. A conscientious fastener engineer can model the assembly using specialized computer software or finite element analysis. This should be followed up with experimental testing to determine the state of friction in the joint and the relationship between torque, angle and clamp load. This is followed up with verification using torque-angle analysis on prototype assemblies.

Controlling torque is an important first step in determining the quality of a product assembled with threaded fasteners. If the tool used in the assembly is not consistent in its application of energy to the fastener, the quality of the assembled product will suffer. For those fasteners that are crucial to safety, reliability or durability of the product, torque alone may not be sufficient to ensure quality. Modern tools and diagnostic methods have been developed to determine the adequacy of the assembly operation, such as torque-angle measurement and control and torque-angle signature analysis. Remember, just because the fastener seems tight does not make the assembly right.

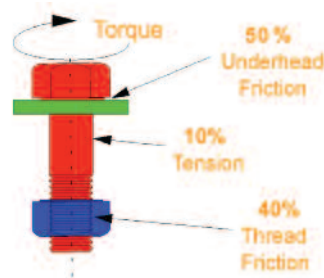


Fig. 1

Threaded fastener analysis has shown that most of the energy applied to a fastener goes into overcoming the friction that exists under the head of the fastener and in the threads. Together, these two sources of friction can typically be as much as 80% to 90% of the applied torque energy, leaving as little as 10% of the energy to transfer into clamp load. Source: RS Technologies

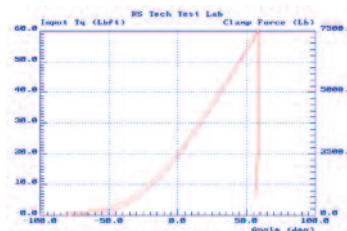


Fig. 2

The fastener was tightened to 20 lbf-ft of torque and then turned 60 degrees, which produced 7,500 pounds of clamp load. Source: RS Technologies

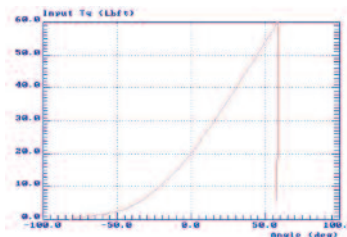


Fig. 3

Ideally, after the parts are brought into alignment, the increase of torque and angle should be a linear process producing a straight torque-angle curve, as shown here after 20 lbf-ft is reached. Source: RS Technologies

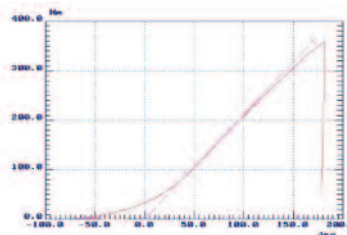
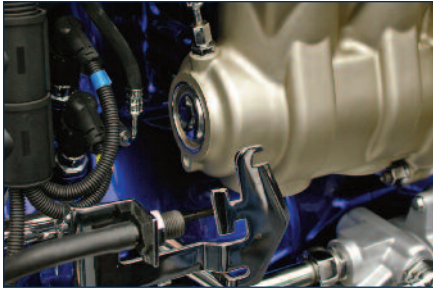


Fig. 4

In the case of embedment of the head of the fastener into the surface of the part, the torque-angle signature starts out linear but begins to flatten out as shown when a straight line is overlaid on the plot. Source: RS Technologies



RS TECHNOLOGIES
A DIVISION OF PCB LOAD & TORQUE, INC.

24350 Indoplex Circle, Farmington Hills, MI 48335
Toll-Free: 888-684-2894 Fax: 248-888-8266
E-mail: rsinfo@pcbloadtorque.com
www.pcbloadtorque.com
ISO 9001 CERTIFIED ■ A2LA ACCREDITED to ISO 17025

RS Technologies, a division of PCB Load & Torque, Inc, is a leading manufacturer of a complete line of rotary and stationary torque sensors, hand torque wrenches, measuring instruments, and threaded fastener torque-tension testing systems with over 40 years of history serving the product assembly and fastener manufacturing community. From ready-to-ship stock products, to custom-made specials, RS Technologies proudly stands behind all products with services customers value most, including calibration services from our A2LA accredited laboratory, 24-hour technical support, a global distribution network, and the industry's only commitment to Total Customer Satisfaction. For more information, please visit www.pcbloadtorque.com.

The Global Leader in Sensors and Instrumentation For All Your Applications



Toll-Free in USA 800-828-8840
E-mail info@pcb.com



Toll-Free in USA 800-959-4464
E-mail imi@pcb.com



Toll-Free in USA 888-258-3222
E-mail sales@larsondavis.com



Toll-Free in USA 800-860-4867
E-mail info@modalshop.com



24350 Indoplex Circle, Farmington Hills, MI 48335 USA
Toll-Free in USA 866-684-7107
24-hour SensorLineSM 716-684-0001
Fax 248-888-8266 E-mail ltinfo@pcbloadtorque.com
www.pcbloadtorque.com
ISO 9001 CERTIFIED ■ A2LA ACCREDITED to ISO 17025

© 2012 PCB Group, Inc. In the interest of constant product improvement, specifications are subject to change without notice. PCB, ICP, Modally Tuned, Spindler, Swiveler and TORKDISC are registered trademarks of PCB Group. SoundTrack LXT, Spark and Blaze are registered trademarks of PCB Piezotronics. SensorLine is a service mark of PCB Group. All other trademarks are property of their respective owners.

LT-RS-Fastener-Assembly-0612

Printed in U.S.A.



Visit www.pcb.com to locate
your nearest sales office